

Dredging Inspection Field Report

Site Observations

Date: 7/14/2021 Field Engineer: Mike Triano

Weather Conditions: Breezy, overcast, scattered Rain Temperature: 80s

Wood Project Number: 2402210005.01.01 Client: Isle of Palms

Contractor: Branch Diversified (BDI) Foreman Onsite: Lance Young

Item	Observations	Photo
Crew Size & Location	<p>30' x 80' barge, moored off to the large Hopper barge in the intracoastal This barge is used to unload the smaller barges.</p> <p>One 20' Wide push barge actively dredging Baseline 2. One 20' Wide push barge actively dredging Baseline 7. Lance advised that today was the first day the barge was dredging within this Baseline. Two Tug operating to move the 20' push barges. One large tug moving large Hopper barges to the DMMA. One 26' Thruster Barge actively dredging in Baselines 3, 4, & 5. Lance advised they are in the final stages of cleanup in these canals at the time of the inspection. One ~ 50' X 100'+ Hopper barge staged in intracoastal east of mooring canals used to transport material to DMMA.</p> <p>20' aluminum boat</p>	<p>Photo: 1, 2, 3, & 5</p> <p>See Map</p>
Equipment on Site	Same as Crew size, 4 mechanical dredges (excavators)	Photos: 1, 2, 3, & 5
Work Completed	<p>S Baseline 1 from POB to ~ Station 31 Majority of N Baseline 1 to terminus: Correction of High Spots within Baseline 1 is occurring as additional Baselines are finished.</p> <p>Mooring Canals Portions of N Baseline 2, 3, 4, 5, & 6</p> <p>BDI indicated that the Mooring & Autobahn Canals are fully completed.</p> <p><u>BDI advised dredging occurs in two phases: on the way in for access & removal of top layer of sediment and on the way out for getting canal to specified grade. This is true for all canals that barges cannot initially access.</u></p> <p><u>Lance Young advised the North IOP Canals will be completed to grade within the next week or two weeks excluding Baseline 7.</u></p>	See Map
Work Underway	<p>Baseline 2 Baseline 5 Baseline 6</p>	See Map
Materials on Site	Stored in ~100' x 50' Hopper barge and One 30' x 80' barge. Both barges are moored in the intracoastal.	Photo: 3



	Lance Young advised the large tug moving the large Hopper barges to and from the DMMA was broken down but once it is repaired (hopefully tomorrow) daily trips will resume to DMMA.	
Manatee Observer	All crew on barges were advised to keep eye out for Manatees - signs posted on northern and southern canals.	Photos: 4
Turbidity Monitoring	0800 reading was 10.0 NTU 1200 reading was 17.0 NTU	Photos: 4
Dewatering	Lance advised dewatering does not occur - drain holes are located in bottom of containers. Lance advised inner canals are mixing zones and therefore sediment/water returning to canals are not of concern.	
Dredging	Mechanical	
Offloading Location	Large ~80' -100'+ storage barge. Foreman advised that there are several barges of this size, and larger that areinterchanged once full. One 30' X 80' Barge located in the Intracoastal east of the Mooring Canals. Both barges are moored in the intracoastal. Foreman advised that trips to the DMMA are taken once these large bargesare full, that usually occurs once a day – will resume once large tug is repaired.	Photo: 3
Posted Permit	Permits are not posted. Wood will provide additional copies of permits to Lance / Anthony next inspection.	
Other...	See Additional Comments Below	

Additional Notes

Projected Schedule:

- Lance Young indicated dredging within Baselines 1, 2, 3, 4, 5, & 6 should be completed in one to two weeks time.
- Dredging within Baseline 7 will continue for approximately 2 weeks.
- Lance Young indicated dredging within South IOP should commence in August.

Anticipated Obstacles to Meeting Schedule:

- Equipment malfunctioning / no operator to dig.
- The very end of Baseline 3, 6 and 2 will have to be finished at a later time, current dredges do not have a long enough boom to reach past the two docks at the end of the canal. Lance Young indicated a smaller 15' barge will be utilized to reach these areas at a later time.
- Displaced material causing contractor to re-work areas to correct high spots.

Engineer's Notes:

- Angel Guzman is no longer Wood's contact for weekly dredging inspections. Until further notice. Lance Young will be the contact for weekly inspections.

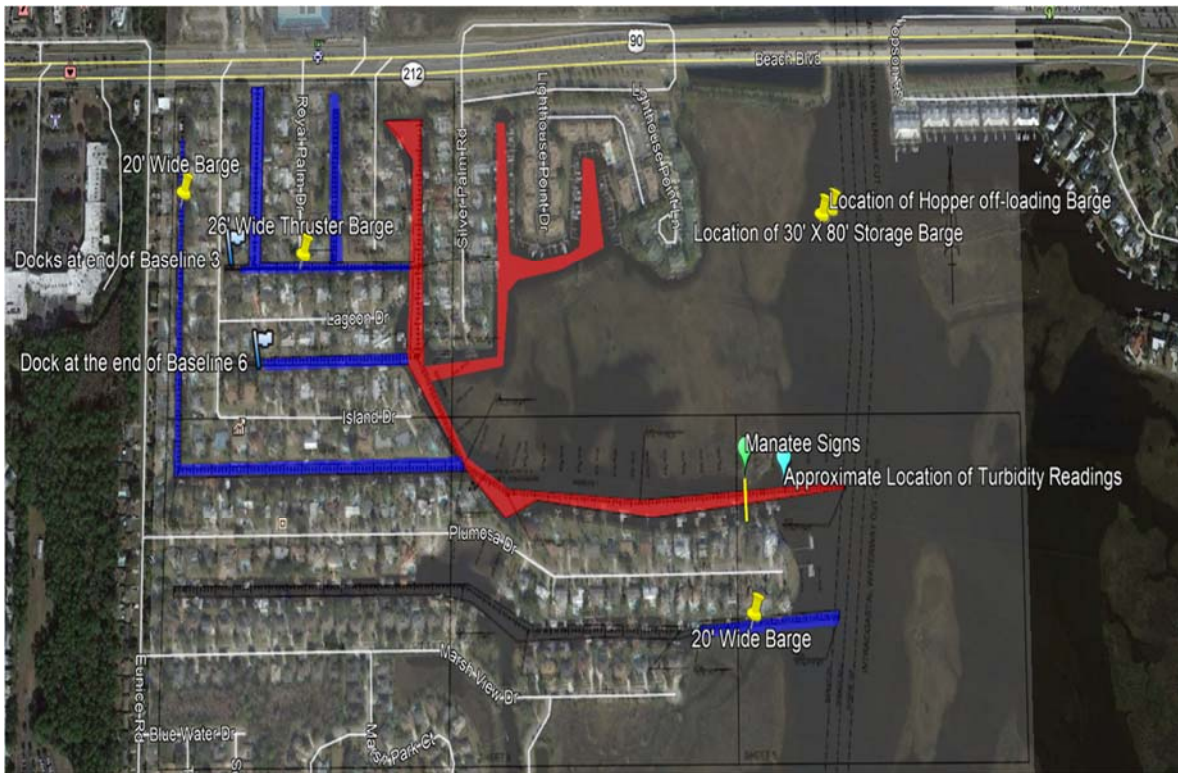


- Lance Young indicated that turbidity readings are being conducted daily by the job superintendent Anthony.
- Lance Young indicated that all high spots identified by Arc Surveying will be corrected to grade at end of dredging.

Field Engineer Signature: 

Date: 7/14/2021

Maps: **Red** is completed Work **Blue** is Work to be completed



Photograph Log:



Photo 1: Typical View of Baseline 3, 26' Wide Thruster Barge motoring to off-load.



Photo 2: Typical view of Baseline 2. 20' Wide push barge was actively off-loading.



Photo 3: View of 20' Push Barge being off-loaded.



Photo 4: Typical view of turbidity barrier and manatee signs as well as 20' Wide Barge being pushed back to Baseline 2.



Photo 5: 20' Wide Push Barge motoring to Baseline 7, where the barge was actively dredging.