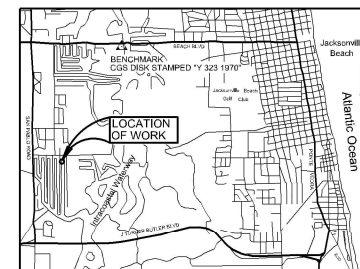


Map showing a proposed canal project (INTRACOASTAL WATERWAY CUT - DU-18) through a residential area. The map includes a north arrow, a sheet index, and a table of benchmarks.

**SHEET INDEX**

BENCHMARKS	NAVD88 ELEV. (FT)	PLANE COORDINATES		DESCRIPTION
		X	Y	
Y 323	15.92	529,59.59	2,165,028.44	CDS BRASS BDK IN CONCRETE STAMPED Y 323 1979
PALM SOUTH 1	4.38	519,091.87	2,157,507.6	SET 12" IRON PIPE W/ CAP LBR 6486



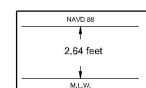
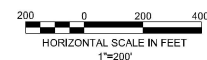
VICINITY MAP  
NOT TO SCALE

- SURVEY NOTES:

1. HORIZONTAL DATUM: NORTH AMERICAN DATUM OF 1983/88, STATE PLANE COORDINATES, FLORIDA EAST ZONE.
2. VERTICAL DATUM: MEAN LOW WATER (MLW), SOUNDINGS ARE IN FEET AND TENTHS, IN.W. DATA OBTAINED FROM LABINS POINT IDENTIFICATION NUMBER 3728.
3. UNITS: U.S. SURVEY FEET.
4. CONTOUR INTERVAL: 1 FOOT.
5. THIS HYDROGRAPHIC SURVEY WAS PERFORMED UTILIZING DIFFERENTIAL GPS (DGPS) SURVEYING METHOD FOR POSITIONAL ACCURACY.
6. SOUNDINGS WERE COLLECTED USING A KJULSEN 302M SINGLE BEAM SONAR. DATA PROCESSING WAS COMPLETED USING HYPERACK HYPSWEEF SOFTWARE.
7. THE INFORMATION DERIVED ON THIS MAP REPRESENTS THE RESULTS OF A SURVEY PERFORMED ON THE INDICATED DATES BELOW AND CAN ONLY BE CONSIDERED AS INDICATING THE GENERAL CONDITIONS AT THAT TIME.
8. VESSEL DATE OF SURVEY  
JOH BOAT JULY 6-10, 2020
9. SURVEY QUALITY CONTROL STANDARDS AND FIELD EQUIPMENT CALIBRATIONS WERE FOLLOWED DURING THIS SURVEY IN ACCORDANCE WITH FM 11162-1003 FOR CLASS 1 HYDROGRAPHIC SURVEYS.
10. INTRACASTAL CHANNEL LIMITS OBTAINED FROM A U.S. ARMY CORPS OF ENGINEERS "RECONSTRUCTION OF THE WATERWAY JACOBSONS TO MIAMI AND MIAMI TO KEY WEST, PROJECT CONDITION SURVEY 7, 19-12-12 PROJECT DEPTH" (JOB NUMBER 04-021-001) IS USED TO VERIFY INFORMATION. IT IS NOT TO BE USED FOR NAVIGATION.
11. BACKGROUND PHOTOGRAPHY WAS OBTAINED FROM WWW.LABINS.ORG, DATE 2017.
12. DOCKS WERE NOT LOCATED DURING THIS SURVEY. LOCATIONS BASED ON AN

### LEGEND/ABBREVIATIONS

- - - - - = CHANNEL CENTERLINE  
 ————— = CHANNEL TOE  
 MLW = MEAN LOW WATER  
 NO. = NUMBER  
 P.I. = POINT OF INTERSECTION  
 POB = POINT OF BEGINNING  
 STA. = STATION  
 NAVD 88 = NORTH AMERICAN  
 VERTICAL DATUM 1988  
 ELEV. = ELEVATION

Relationship between NAVD 88  
and Mean Low Water

**Richard J. Sawyer**  
Professional Surveyor and Mapper No. 6131  
NOT VALID WITHOUT THE SIGNATURE AND THE ORIGINAL RAIN

Project Title: Isle of Palms S Hydrographic S

Prepared For: **Isle of Palms Special District**  
501 Riverside Avenue  
Jacksonville, FL 32202

**Arc Surveying & Mapping, Inc.**  
Professional Hydrographers • Surveyors • Mappers  
5202 San Juan Avenue  
Jacksonville, Florida 32210  
904.384.8377

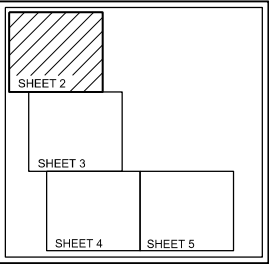


LB No. 6487
Drawn By: D. Trubits
Scale: see map
Plot Date: 07/15/20
File Name:
Fld Bk / Pg:NA
ARC Project No.: 2020-0077
SHEET:1 OF: 26





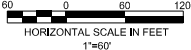
SHEET INDEX



LEGEND/ABBREVIATIONS

- = CHANNEL CENTERLINE
- - - = CHANNEL TOE
- MLW = MEAN LOW WATER
- NO. = NUMBER
- P.I. = POINT OF INTERSECTION
- POB = POINT OF BEGINNING
- STA. = STATION
- NGVD = NATIONAL GEODETIC VERTICAL DATUM
- ELEV. = ELEVATION

- NOTES:
1. REFER TO SURVEY NO. 2020-0077
  2. SEE SHEET NO.1 FOR SURVEY NOTES.



DATE	BY	REVISION

Project Title:  
**Isle of Palms South**  
Hydrographic Survey

Prepared For:  
**Isle of Palms Special District**  
901 Red Bank Avenue  
Jacksonville, FL 32202

Arc Surveying & Mapping, Inc.  
Professional Hydrographers • Surveyors • Mappers  
5202 San Juan Avenue  
Jacksonville, FL 32210  
904.384.4377

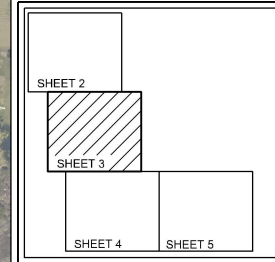


LD No. 6487  
Drawn By: D. Truitt  
Scale: see map  
Plot Date: 07/15/20  
File Name:  
File Path:  
ARC Project No.:  
2020-0077  
SHEET: 2 OF 26





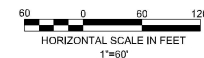
SHEET INDEX



LEGEND/ABBREVIATIONS

----	= CHANNEL CENTERLINE
---	= CHANNEL TOE
MLW	= MEAN LOW WATER
NO.	= NUMBER
P.I.	= POINT OF INTERSECTION
POB	= POINT OF BEGINNING
STA.	= STATION
NGVD	= NATIONAL GEODETIC VERTICAL DATUM
ELEV.	= ELEVATION

- NOTES:  
1. REFER TO SURVEY NO. 2020-0077  
2. SEE SHEET NO.1 FOR SURVEY NOTES.



DATE	BY	REVISION

Project Title:  
Isle of Palms South  
Hydrographic Survey

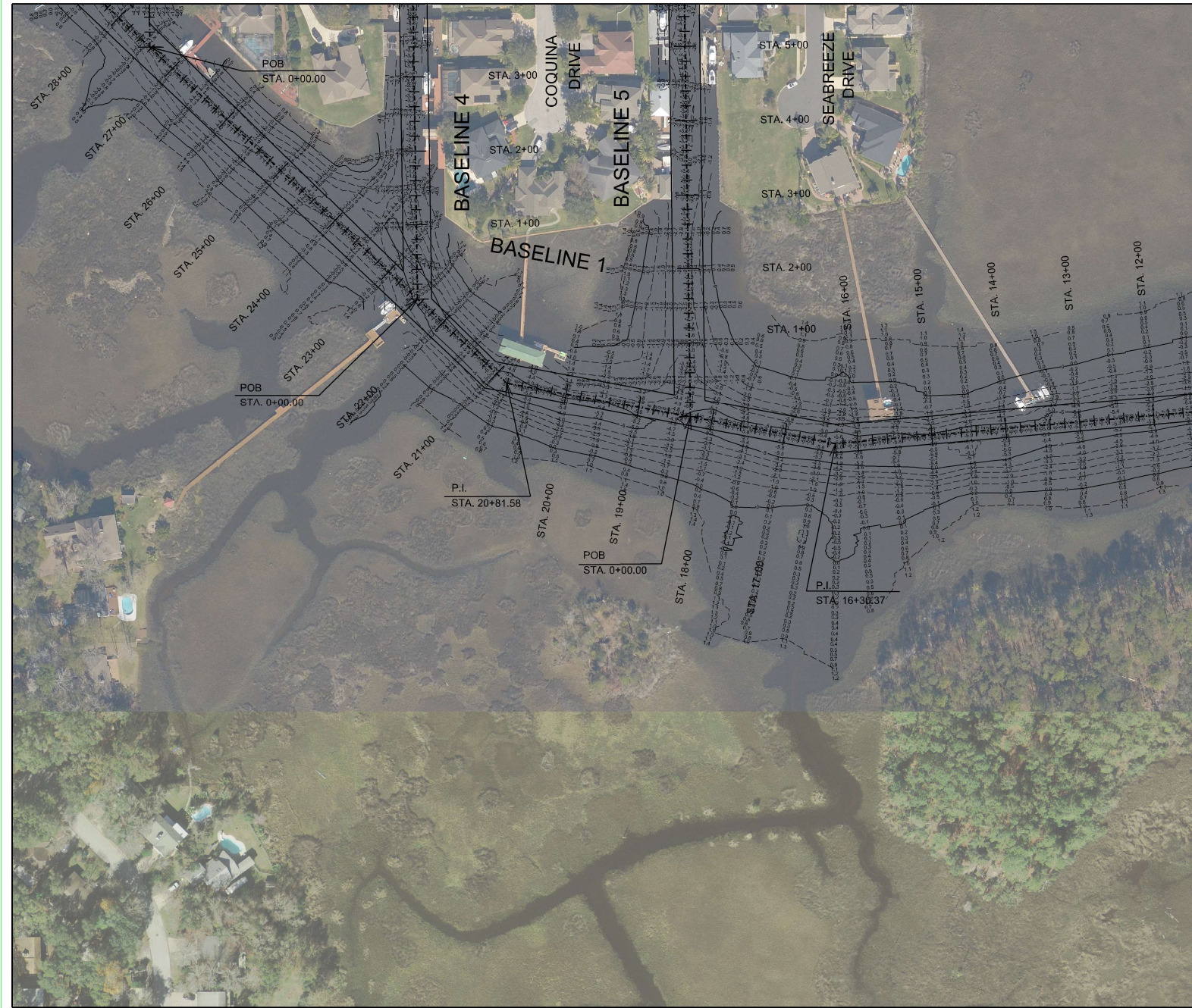
Prepared For:  
Isle of Palms Special District  
901 Seabreeze Blvd.,  
Jacksonville, FL 32202

Arc Surveying & Mapping, Inc.  
Professional Hydrographers • Surveyors • Mappers  
5202 San Juan Avenue  
Jacksonville, FL 32202  
904.384.6377

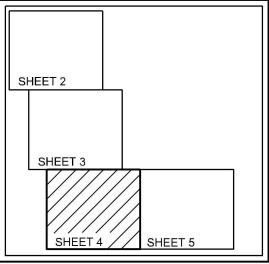


LD No. 5487
Drawn By: D. Trabis
Scale: see map
Plot Date: 07/15/23
File Name:
File Path: \\pgha
ARC Project No.: 2020-0077
SHEET: 3 OF 25





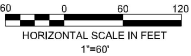
SHEET INDEX



LEGEND/ABBREVIATIONS

- = CHANNEL CENTERLINE
- = CHANNEL TOE
- MLW = MEAN LOW WATER
- NO. = NUMBER
- P.I. = POINT OF INTERSECTION
- POB = POINT OF BEGINNING
- STA. = STATION
- NGVD = NATIONAL GEODETIC VERTICAL DATUM
- ELEV.= ELEVATION

NOTES:  
1. REFER TO SURVEY NO. 2020-0077  
2. SEE SHEET NO.1 FOR SURVEY NOTES.



DATE	BY	REVISION

Project Title:  
Isle of Palms South  
Hydrographic Survey

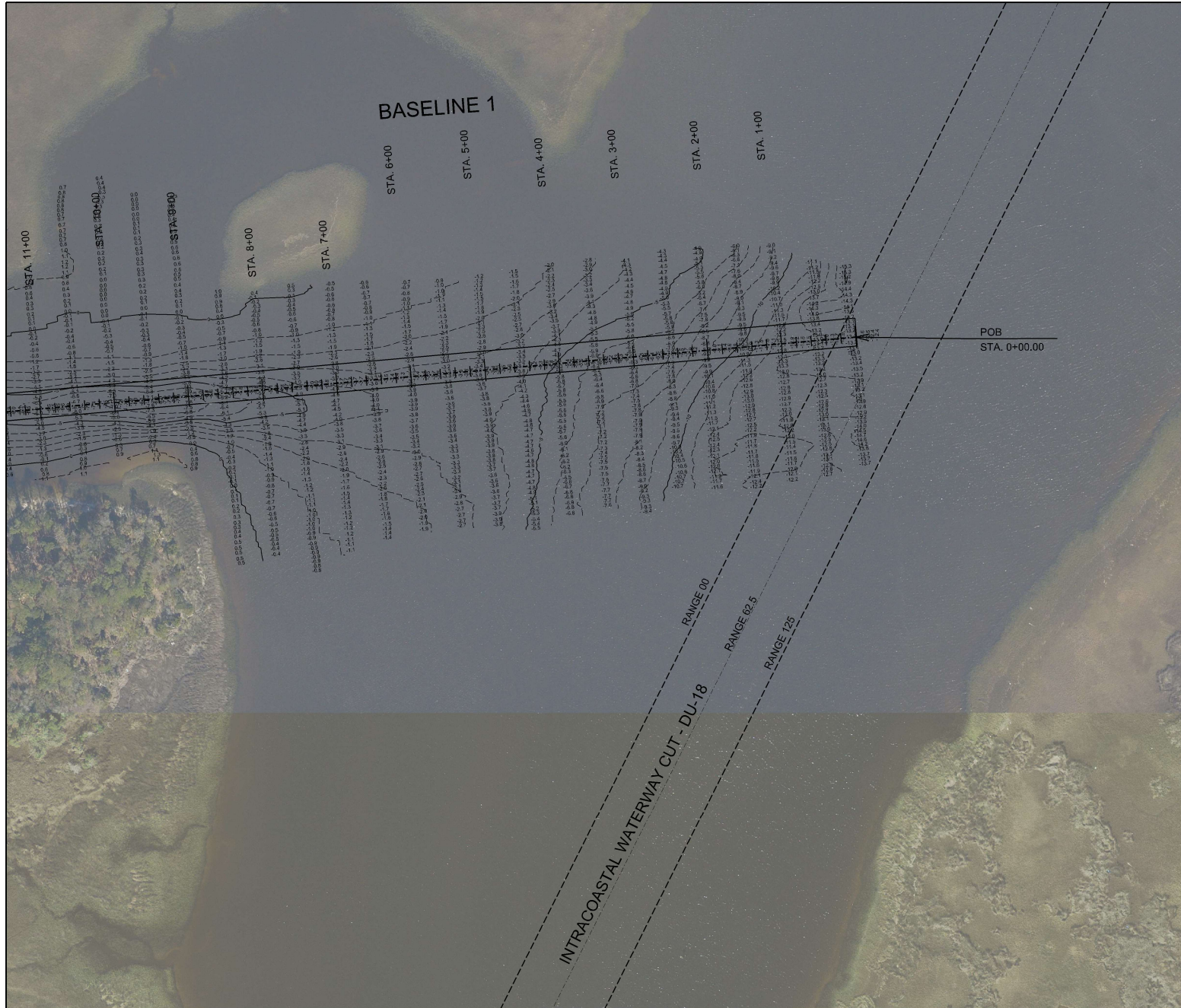
Prepared For:  
Isle of Palms Special District  
904 S. Palmetto Avenue  
Jacksonville, FL 32209

Arc Surveying & Mapping, Inc.  
Professional Hydrographers • Surveyors • Mappers  
5202 San Juan Avenue  
Jacksonville, FL 32217  
904.394.6377

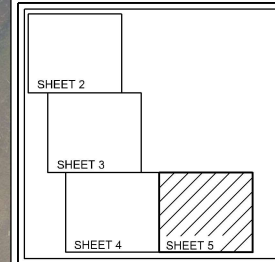


LD No. 5487
Drawn By: D. Tralhe
Scale: see map
Plot Date: 07/15/20
File Name:
File Path: \\pgha
ARC Project No.: 2020-0077
SHEET: 4 OF 25





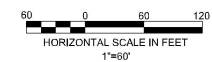
#### SHEET INDEX



#### LEGEND/ABBREVIATIONS

- = CHANNEL CENTERLINE
- = CHANNEL TOE
- MLW = MEAN LOW WATER
- NO. = NUMBER
- P.I. = POINT OF INTERSECTION
- POB = POINT OF BEGINNING
- STA. = STATION
- NGVD = NATIONAL GEODETIC VERTICAL DATUM
- ELEV. = ELEVATION

- NOTES:
1. REFER TO SURVEY NO. 2020-0077
  2. SEE SHEET NO.1 FOR SURVEY NOTES.



DATE	BY	REVISION

Project Title:  
Isle of Palms South  
Hydrographic Survey

Prepared For:  
Isle of Palms Special District  
5202 San Juan Avenue  
Jacksonville, FL 32209

Arc Surveying & Mapping, Inc.  
Professional Hydrographers • Surveyors • Mappers  
5202 San Juan Avenue  
Jacksonville, FL 32209  
904.394.6377



LD No. 5487  
Drawn By: D. Tralala  
Scale: see map  
Plot Date: 07/15/20  
File Name:  
File Path:  
ARC Project No.:  
2020-0077  
SHEET: 5 OF 25